

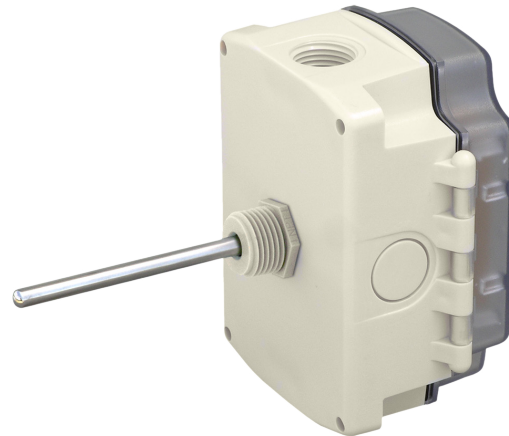
# ZS IMMERSION SENSORS



## COMMUNICATING CLAMP-ON SENSORS

The Automated Logic® ZS line of communicating immersion sensors are designed to monitor water temperature in retrofit or filled pipe applications. The sensor is potted inside a 1/4" stainless steel probe with a thermally conductive compound. All immersion units have etched Teflon® lead-wires and double encapsulated sensors to create a watertight package that can withstand a wide range of humidity and condensation.

The ZS immersion sensors connect directly to the dedicated sensor network (Rnet) of an Automated Logic controller. This communicating sensor network supports up to 15 ZS sensors through a single port, eliminating the need to consume multiple inputs on the controller.



Immersion unit probes are required to be inserted into a thermowell.



The WebCTRL building automation system gives you the ability to understand your building operations and analyze the results. Integrate environmental, energy, security and safety systems into one powerful management tool that helps you reduce energy consumption, increase occupant comfort, and achieve sustainable building operations.

T  
P  
I  
X  
X  
Z  
B  
E  
X  
Y  
V  
M  
I  
N  
T  
A  
T  
N  
H  
O  
D  
K  
K  
X  
E  
A  
T  
O  
W  
Z  
A  
B  
S  
P  
M  
V  
O  
R  
P  
J  
F  
Z  
S

# SPECIFICATIONS

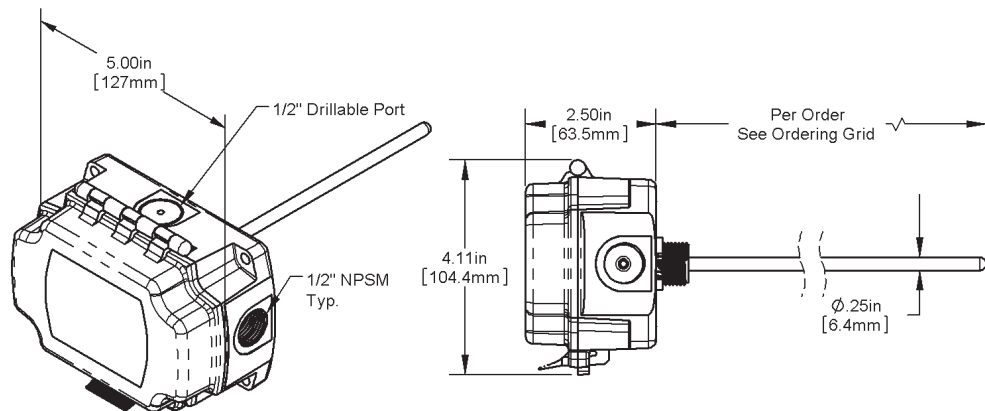


Sensing Element	Range	Accuracy
Temperature (system)	-40° F to 212° F (-40° C to 100° C)	±1.3° F (0.72° C)
Power Requirements	12 Vdc @ 6 mA	
Power Supply	A controller supplies the Rnet sensor network with 12 Vdc @ 210 mA. Additional power may be required for your application. See ZS Sensor Installation Guide	
Communication	115 kbps Rnet connection between sensor(s) and controller 15 sensors max per Rnet network; 5 sensors max per control program	
Enclosure	<b>Material</b> Polycarbonate, UL94V-0	<b>Rating</b> NEMA, IP66, UV rated
Probe	304 S/S 0.25" (0.64 cm) diameter Length specific to part ordered	
Mounting	Probes are required to be inserted into a thermowell	
Listed By	FCC Part 15-Subpart B-Class B, CE	

## Back Mount Shown

### Enclosure Dimensions

**W** = 5.0 in. (12.7 cm)  
**H** = 4.15 in. (10.54 cm)  
**D** = 2.5" (6.35 cm)



Part # (back probe)	Part # (bottom)	Description
ZSI-B-2-6-B	ZSI-S-2-6-B	ZS Immersion Sensor 2" in IP65 enclosure
ZSI-B-4-6-B	ZSI-S-4-6-B	ZS Immersion Sensor 4" in IP65 enclosure
ZSI-B-8-6-B	ZSI-S-8-6-B	ZS Immersion Sensor 8" in IP65 enclosure
ZSI-T-2-WSS-B	ZSI-T-4-WSS-B	Insertion thermowell - two-piece welded 304 stainless
ZSI-T-2-MSS-B	ZSI-T-4-MSS-B	Insertion thermowell - one-piece machined 304 stainless
ZSI-T-2-MB-B	ZSI-T-4-MB-B	Insertion thermowell - one-piece machined brass