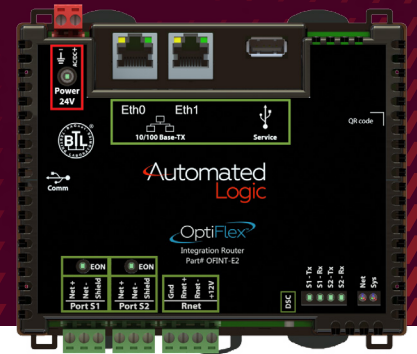


# SNMP Protocol

ON OPTIFLEX™ INTEGRATORS

Automated  
Logic

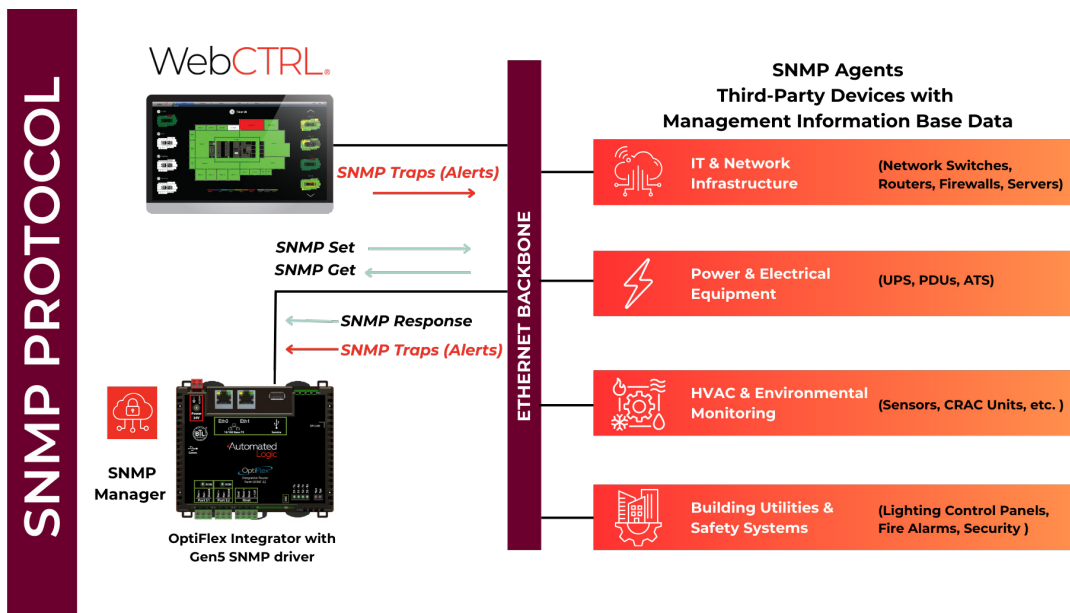


## SNMP

The Simple Network Management Protocol (SNMP) is a standard protocol used to monitor and manage devices like routers, switches, and servers with the WebCTRL® system via an Automated Logic® OptiFlex integrator. This creates a single, centralized view enabling operators and network administrators to streamline building operations, maintain network health, troubleshoot issues, and receive automated alerts about issues that impact building performance.

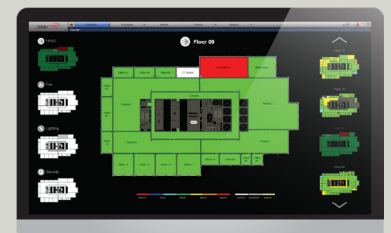
## How it Works

The OptiFlex integrator acts as an SNMP manager, communicating with SNMP agents on your network devices to read and write data, as well as receive event notifications called traps. The SNMP agent retrieves Management Information Base (MIB) data by referencing specific Object Identifier (OID) values to report device status to the SNMP manager.



WebCTRL®

The WebCTRL building automation system gives you the ability to understand your building operations and analyze the results. Integrate environmental, energy, security and safety systems into one powerful management tool that helps you reduce energy consumption, increase occupant comfort, and achieve sustainable building operations.



## Specifications

OptiFlex Integrators - SNMP Specifications	
<b>Driver</b>	drv_gen5_108-06-20206.driverx or later
<b>Compatible Part Numbers</b>	OFHI-A, OFINT-E2, G5CE
<b>Read/Write Capability</b>	Can read from and write to the third-party equipment
<b>Supported SNMP Equipment</b>	Any device supporting SNMP protocol versions v1, v2c, or v3
<b>Network Media Type</b>	Any device supporting SNMP protocol versions v1, v2c, or v3 Ethernet (via CAT5 or higher cable)
<b>Max Devices Supported</b>	Up to 100 devices per OptiFlex integrator
<b>OID Shortcuts Capacity</b>	Up to 50 OID shortcuts can be defined
<b>Trap Ports Capacity</b>	Up to 5 Trap Ports can be defined
<b>Controller Port</b>	Gig-E Port
<b>Maximum Cable Length</b>	328 feet (100 meters)
<b>Default Request Port</b>	161
<b>Default Trap Port</b>	162
<b>Max Points Per Request</b>	Configurable from 1-1000 (Default: 1)
<b>Max Pending Packets</b>	Configurable from 1-50 (Default: 5)
<b>Interpacket Delay</b>	Configurable from 0-1000 milliseconds (Default: 20 ms)
<b>SNMP v1/v2c Security</b>	Uses Community String Profiles (Read, Write, Trap)
<b>SNMP v3 Security</b>	Uses User Security Profiles (Auth and Privacy Passphrases)