

## CASE STUDY

### DataBank Data Centers

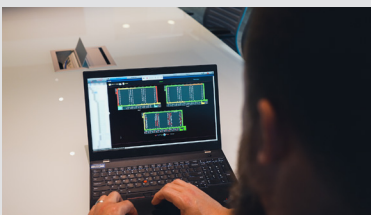
28 Facilities  
Across the U.S.



## POWERING MISSION CRITICAL PERFORMANCE

### THE CHALLENGE

- **Long-Term Standardization:**  
*DataBank needed to bring new data centers online quickly while maintaining a consistent controls strategy across a diverse and growing portfolio of facilities.*
- **Maintaining Uptime:**  
*Supporting strict SLA requirements and regulations required real-time monitoring, rapid issue detection, and reliable control across both HVAC and electrical systems.*
- **Integrating and Modernizing at Scale:**  
*Supporting 28+ facilities with diverse systems demanded seamless integration, legacy retrofits, and a scalable foundation for future growth.*



DataBank uses the WebCTRL® system for centralized monitoring, control, and alarming across their portfolio.

### Project Objectives

DataBank Holdings is a leading colocation provider operating a growing portfolio of mission-critical data centers across the United States. As demand for digital infrastructure accelerated, DataBank sought to standardize its building automation strategy across both new and existing facilities.

The objective was to implement a scalable, unified platform capable of delivering real-time visibility and control across HVAC, power, and IT systems. This approach would ensure consistent performance, support rapid expansion, and maintain strict uptime requirements. DataBank also aimed to modernize legacy infrastructure, integrate diverse systems, and deploy a flexible, cloud-ready solution that would enable secure system access for each individual customer.

### The Solution



DataBank partnered with Logical Solutions Inc. (LSi), the local Automated Logic dealer in Dallas, Texas, to implement a standardized, scalable building automation strategy across its expanding portfolio. At the core is the Automated Logic WebCTRL® building automation system (BAS), which provides centralized monitoring, control, and alarming for DataBank's mission-critical infrastructure.

DataBank operates a centralized, on-premise WebCTRL system that unifies essential infrastructure—including chillers, AHUs, CRAC units, cooling systems, generators, switchgear, UPS systems, EPMS, and DCIM—into a single pane of glass, providing a real-time view of mechanical and electrical health across its facilities.

The solution supports portfolio-wide operations through real-time system data, intuitive graphics, and a consistent controls framework. Built-in trending and alarming help operations teams identify issues early, respond quickly, and maintain strict uptime requirements.

DataBank's internal teams own and manage the WebCTRL system and associated tools, performing their own programming, engineering, and graphics development. This approach improves response times, strengthens operational control, and drives more efficient day-to-day management.

DataBank also expanded its capabilities by implementing Nlyte Software—another Carrier solution—as part of its Data Center Infrastructure Management (DCIM) strategy. Native integration with WebCTRL connects IT asset data with facility systems, enabling more informed decisions around power usage and capacity.

The standardized WebCTRL solution now supports a growing network of sites, allowing DataBank to bring new data centers online quickly while modernizing existing facilities.



DataBank leverages Automated Logic's WebCTRL® building automation system to meet the demands of their mission critical facilities across the U.S.

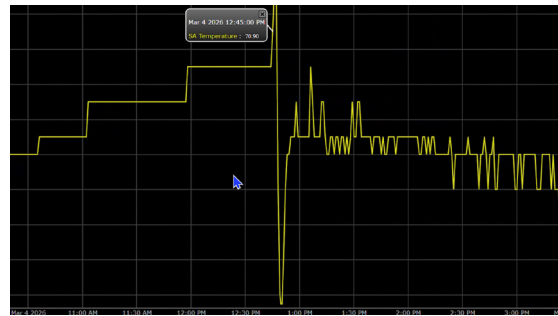
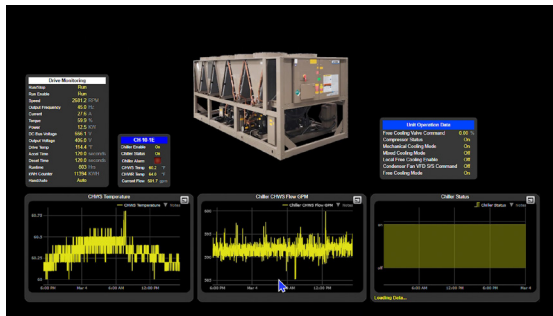
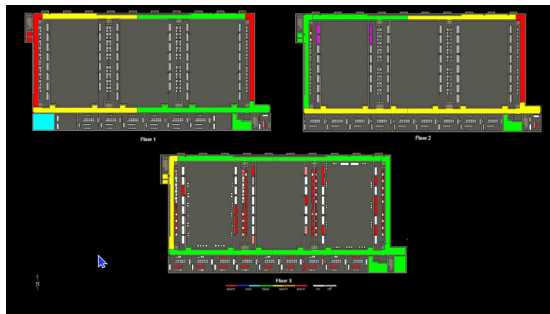
## The Result and Future Plans

The completed solution enabled DataBank to scale rapidly while maintaining high performance, visibility, and uptime. The WebCTRL® platform unified HVAC and EPMS systems, improving real-time monitoring, accelerating response times, and increasing operational efficiency. Integration with Nlyte Software enhanced capacity management and power visibility.

Looking ahead, DataBank is extending its platform with WebCTRL Cloud to deliver secure, customer-specific access—enabling greater transparency and self-service while maintaining centralized control.

***“Both Logical Solutions and Automated Logic support us and find different ways to help us meet our deadlines. That experience allows us to support our customers with uptime, reporting, and alarming - things we must have to keep our customer experience great.”***

- **Damen Robbins**  
Director, Building Systems  
DataBank Data Centers



With real-time data, trending, and alarming, the WebCTRL® building automation system helps the DataBank operations team proactively identify issues, respond faster, and maintain strict uptime requirements.



**For more information, visit [automatedlogic.com](http://automatedlogic.com).**



**DATA CENTERS**