

# M-BUS INTEGRATION SOLUTION

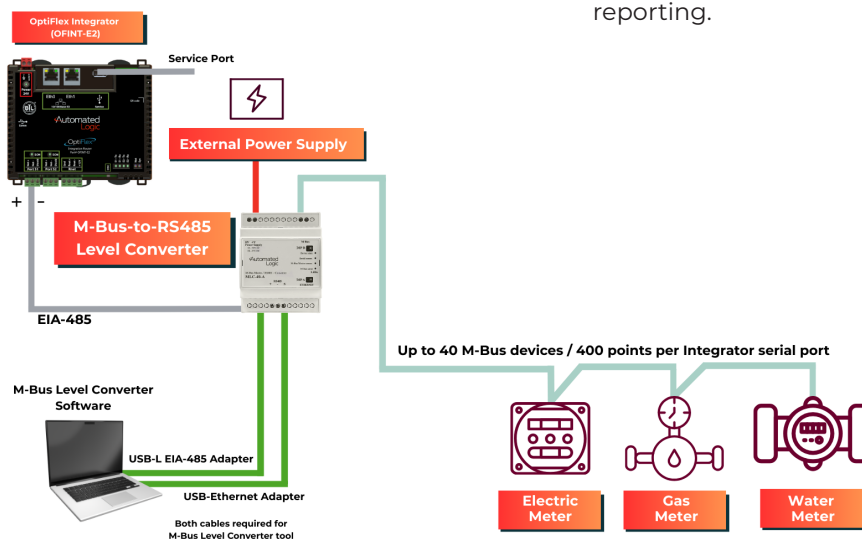
FOR THE WEBCTRL® BUILDING AUTOMATION SYSTEM

Automated  
Logic

The M-Bus integration solution combines an OptiFlex™ Integrator and M-Bus Level Converter (part number MLC-40-A), to bring M-Bus utility meter data into the WebCTRL building automation system. Tailored for international markets, it elevates building-wide visibility and simplifies compliance and sustainability reporting.

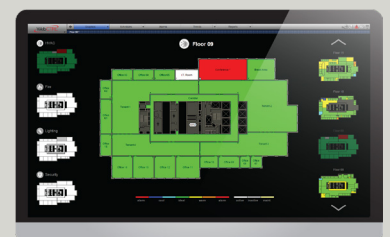
## Solution Features/Benefits

- **Streamlined Installation:** The M-Bus Level Converter supports an unpolarized two-wire connection to M-Bus networks and features a standard 35mm DIN-rail mount for secure and efficient setup startup.
- **High-Density Monitoring:** Supports up to 40 standard M-Bus devices and 400 points per converter, offering a scalable solution for managing diverse utility meters in small to large-scale commercial facilities.
- **Streamlined M-Bus Discovery & Point Management:** The MLCT (M-Bus Level Converter Tool) automatically scans the M-Bus network to identify available points and generates a downloadable .csv file with precise point addresses for direct mapping into WebCTRL.
- **Facilitates Regulatory Alignment:** Supports compliance with international standards, such as the Energy Performance of Buildings Directive (EPBD), by delivering the measurement data required for tenant billing and sustainability reporting.



WebCTRL®

The WebCTRL building automation system gives you the ability to understand your building operations and analyze the results. Integrate environmental, energy, security and safety systems into one powerful management tool that helps you reduce energy consumption, increase occupant comfort, and achieve sustainable building operations.



## M-Bus Solution Specifications

OptiFlex™ Integrator	
Compatible Integrators	Part Numbers: OFHI, OFHI-A, G5CE, and OFINT-E2
OptiFlex Integrator Driver	drv_gen5_108-06-20206.driverx or later
Max Devices Supported	80 M-Bus devices per Integrator 40 M-Bus devices per serial port (with M-Bus-Level Converters) 800 total M-Bus points per Integrator
Read/Write Capability	Read only
System Compatibility	WebCTRL® 9.0 or later
M-Bus Level Converter (part number: MLC-40-A)	
Power Supply	15-21V AC or 18-35V DC
Power Consumption	3.5 W/VA (No Load) to 5 W/VA (Full Load)
Max Devices Supported	Up to 40 M-Bus devices per Converter (1.5 mA each)
Baud Rate Supported	300 to 38,400 bps (configurable with MLCT software)
Isolation	Electrical isolation: Serial/M-Bus, Serial/Power, and M-Bus/Power
Communication Ports	(1) RS-485 port, (1) M-Bus port, (1) Ethernet port EIA-485 Port: RS-485 port for connection to OptiFlex Integrator (1,200m max) M-Bus Port: Unpolarized two-wire port; 1,000m max segment length Configuration Port: RJ45 Ethernet port for M-Bus Level Converter Tool (MLCT) - Windows Compatible
Environmental Operating Range	Operating Temp: -40°C to 70°C (-40°F to 158°F) Storage Temp: -40°C to 85°C (-40°F to 185°F) Humidity: 10% to 90% RH, non-condensing
Compliance	CE, WEEE, RoHS
Enclosure	Fire-retardant ABS plastic, UL-94-5VA, IP20, 99.44 mm (3.915 in) H (including the DIN clip) x 70.87 mm (2.790 in.) W x 61.85 mm (2.435 in.) D.
Mounting	Standard 35mm DIN rail mounting
Related Documentation	M-Bus Protocol cutsheet, M-Bus Integration Guide for startup, commissioning, and auto-discovery details, and OptiFlex™ Integrator Technical Instructions for hardware installation and setup.

### M-Bus Level Converter Dimensions - mm (in)

