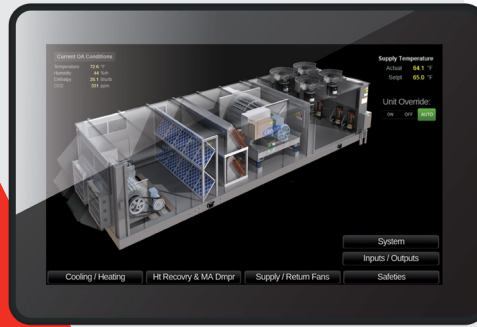


EQUIPMENT TOUCH

EQT3 DISPLAYS



Automated
Logic

GRAPHICAL TOUCHSCREEN

Automated Logic Equipment Touch EQT3 displays provide building operators and technicians with visibility and control over a single piece of HVAC equipment or building zone. Available in three sizes, they feature an illuminated color, capacitive touchscreen display and are designed to connect to a single Automated Logic controller, making management of the connected HVAC equipment both intuitive and simple.

KEY FEATURES

- Available in three sizes (7", 10.1", and 15")
- Rugged, industrial grade front display - suitable for mechanical rooms or board room mounting
- Rnet connection or Service Port (either Ethernet or USB) connection
- Fully customizable touchscreen for navigation and control
 - Default system screens such as scheduling and trends
- Supports international languages
 - Support for graphics and animations
- Screen captures can be saved to a USB flash drive
- Built-in PDF viewer

BENEFITS*

- View current control settings
- View operating mode (heat/cool/economizer)
- Initiate timed local override
- Multi-level password protection for security
- Custom screens can show equipment graphic and operating status
- Easy to view and/or edit equipment configuration, schedules, trends, and alarms with pre-designed screens
- Trending with support for pinch zoom and swiping to move along time line
- Works great as a technician tool and as a user interface

**A custom equipment touch file is required*

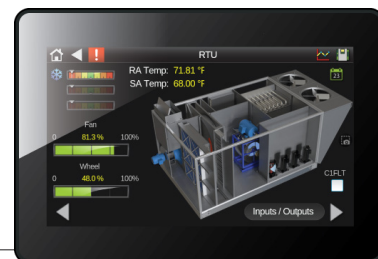


WebCTRL®

The WebCTRL building automation system gives you the ability to understand your building operations and analyze the results. Integrate environmental, energy, security and safety systems into one powerful management tool that helps you reduce energy consumption, increase occupant comfort, and achieve sustainable building operations.

SPECIFICATIONS

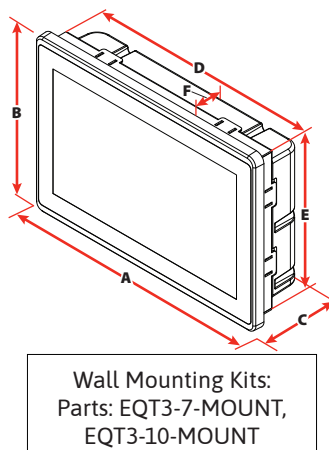
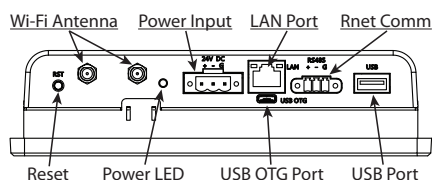
Part #	EQT3-7 Equipment Touch 7" Display	EQT3-10 Equipment Touch 10.1" Display	EQT3-15 Equipment Touch 15" Display
TFT (Widescreen)	7" (17.8 cm)	10.1" (25.7 cm)	15.6" (39.62 cm)
Resolution	1024 x 600 pixels (170 ppi)	1280 x 800 pixels (149 ppi)	1366 x 768 pixels (100 ppi)
Brightness	320 cd/m ² (typ.)	350 cd/m ² (typ.)	400 cd/m ² (typ.)
Contrast Ratio	1000:01 (typ.)	800:01 (typ.)	500:01 (typ.)
Viewing Angle	-75~70(H); -75~75(V)	-85~85(H); -85~85(V)	-85~85(H); -85~80(V)
Max Colors	16.7M (8-bit)	16.7M (8-bit)	16.7M (8-bit)
Touchscreen	Capacitive Multi-Touch (P-CAP)		



Power	50-60 Hz, Class 2, 24 VDC (±15%), 1A (EQT3-7, EQT3-10, EQT3-15)
Communication	
Comm Input	EIA-485 serial port for connection to the Rnet sensor network (115kbps)
USB	Port for upgrades, file copying, screen captures, file transfers, and connection to service port on OptiFlex™ controllers
USB OTG	Port for factory programming (firmware upgrades)
LAN	RJ-45 Ethernet connection to service port on OptiPoint™ controllers
System	
Processor	I350 MT8365, Quad Core 2.0 GHz
System Memory	(7" and 10" models) 3 GB LPDDR4 RAM, (15" model) 4 GB LPDDR4 RAM
Storage	32 GB on-board eMMC flash memory to store program code and screen file
Operating Conditions	-4°F to 122°F (-20°C to 50°C), 10% to 90% RH (non-condensing), Front IP65 water and dust proof (rear: IP20), Vibration tested to EN 60068-2-64
Storage Temperature	-13°F to 158°F (-25°C to 70°C)
Mounting	Wall or panel mounting (7" and 10" models) within the building interior
Device Identification	A serial number label is on the back of the device
Real Time Clock	Real-time clock keeps track of time in the event of a power failure for at least 3 days
Compliance	CE (Class B), FCC (Class B), CAN/CSA C22.2 No. 62368-1-14, ANSI/UL (62368-1, 2nd Ed), Vibration tested to EN60068-2-6, IP65 rated (front) IP20 rated (rear)

Figure 1: Physical Dimensions

Ports



7" Display

A: 185 mm (7.28")	D: 175 mm (6.89")
B: 128 mm (5.04")	E: 118 mm (4.65")
C: 46 mm (1.81")	F: 39 mm (1.52")

10" Display

A: 267 mm (10.5")	D: 244 mm (9.61")
B: 182 mm (7.17")	E: 159 mm (6.26")
C: 47 mm (1.85")	F: 39 mm (1.52")

15" Display

A: 421 mm (16.57")	D: 388.4 mm (15.29")
B: 260.5 mm (10.26")	E: 195.5 mm (7.7")
C: 52.5 mm (2.07")	F: 46.5 mm (1.83")