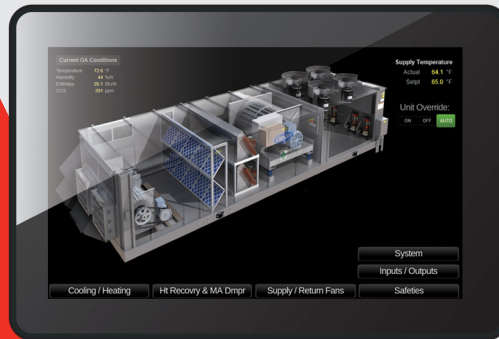


# OPTIPOINT™ INTERFACE

EQUIPMENT OR ZONE CONTROL STATIONS



Automated  
Logic

## GRAPHICAL TOUCHSCREEN CONTROL STATIONS

Automated Logic OptiPoint™ Interfaces provide building operators and technicians with visibility and control over a single piece of HVAC equipment or building zone. Available in two sizes, they feature an illuminated color, capacitive touchscreen display and are designed to connect to a single WebCTRL® controller, making management of the connected HVAC equipment both intuitive and simple.

OptiPoint™

## KEY FEATURES AND BENEFITS

### Application Features

- Draw occupants' attention to important information with conditional alarming, color changes, and graphic animations
- Features a high resolution, capacitive multi-touch screen
- Support for 13 international languages and characters
- Can serve as a technician's HVAC equipment interface
- Connects directly to a single WebCTRL® controller
- Multi-level password protection for security
- View trends, with added support for pinch/zoom and swiping to move along timeline
- Access virtually any point in the controller
- View and edit BACnet time schedules
- View all alarms in controller
- Change setpoints easily

### Hardware Features

- Rugged, industrial grade display including an IP65 rating on the front of the display and a wide temperature range and vibration resistance
- Fanless cooling system and ultra-low power consumption
- Available in two sizes: 7.0" and 10.1"
- Can be panel or wall-mounted

### Programming Features

- Easily programmable using ViewBuilder WYSIWYG editor, which includes a library of interactive controls
- Supports standard Equipment Touch files
- Support for graphics and animations
- USB port for local device updates
- Supports screen capture to USB flash drive
- Built-in PDF viewer




WebCTRL®

The WebCTRL building automation system gives you the ability to understand your building operations and analyze the results. Integrate environmental, energy, security and safety systems into one powerful management tool that helps you reduce energy consumption, increase occupant comfort, and achieve sustainable building operations.

## SPECIFICATIONS

Part #	EQT3-7 OptiPoint 7" IAQ Display	EQT3-10 OptiPoint 10.1" IAQ Display
TFT (Widescreen)	7" (17.8 cm)	10.1" (25.7 cm)
Resolution	1024 x 600 pixels (170 ppi)	1280 x 800 pixels (149 ppi)
Brightness	320 cd/m (typ.)	350 cd/m (typ.)
Contrast Ratio	1000:01 (typ.)	800:01 (typ.)
Viewing Angle	-75~50(H); -75~75(V)	-85~85(H); -85~85(V)
Max Colors	16.7M (8-bit)	16.7M (8-bit)
Touch	Capacitive Multi-Touch (P-CAP)	Capacitive Multi-Touch (P-CAP)
Power	24Vdc, 1A	
Communication		
Comm Input	Ethernet, USB, or EIA-485 based serial port for connection to the Rnet network (115kbps)	
USB	For upgrades, screen captures, and file transfers	
USB OTG	Micro-USB "On the Go" port for firmware upgrades	
System		
Processor	I350 MT8365, Quad Core 2.0 GHz	
System Memory	24Vdc @ 100mA total current capacity LPDDR4: 3GB RAM to store variable data and LCD data	
Storage	32 GB on-board eMMC flash memory to store program code and screen file	
Mounting	Wall or panel mounting within the building interior	
Device Identification	A serial number label is on the back of the device	
Real Time Clock	Real-time clock keeps track of time in the event of a power failure for at least 3 days	
Compliance	CE (Class B), UKCA, FCC (Class B), UL 604031, Vibration tested to EN60068-2-6, IP65 rated (front) IP20 rated (rear)	



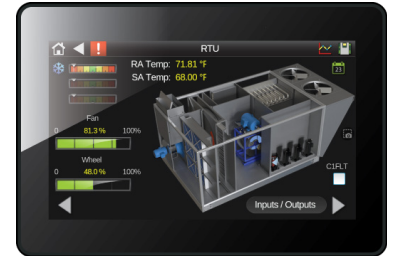
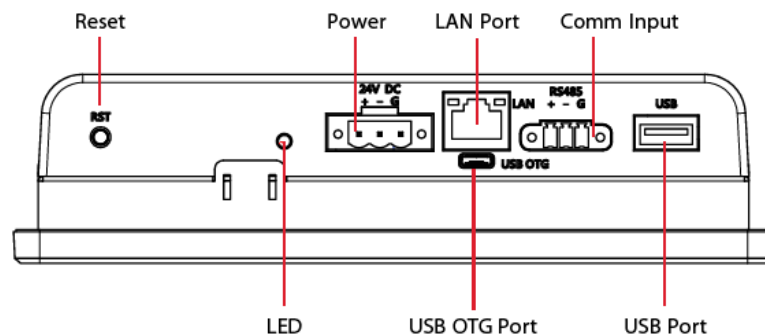


Figure 1: Physical Dimensions

### Ports



#### OptiPoint 7 Interface

A: 185 mm (7.28")	D: 175 mm (6.89")
B: 128 mm (5.04")	E: 118 mm (4.65")
C: 46 mm (1.81")	F: 39 mm (1.52")

#### OptiPoint 10 Interface

A: 267 mm (10.5")	D: 244 mm (9.61")
B: 182 mm (7.17")	E: 159 mm (6.26")
C: 47 mm (1.85")	F: 39 mm (1.52")

